

Ratios of Students per Household **3**

While the common assumption is that every home contains an average of two students, in reality this ratio of students per home is actually much lower. Most suburban Districts average about 0.5 to 0.75 students per home overall, but more importantly, some specific neighborhoods have much higher and much lower ratios. It is important for PASA to understand which neighborhoods are more student-oriented and which neighborhoods house more empty-nest families so that comparable ratios can be applied to the projected new housing.

Ratios of Students per Household – Single Family Housing

The first map and chart in this chapter show ratios of students for single-family units within major subdivisions. These ratios were gathered through field work to analyze the number of currently occupied homes on each street for representative subdivisions throughout the District.

The ratios of students per home ranged from **0.00 to 3.00** in specific subdivisions (with the latter from a subdivision with a very small sample size), and the weighted average throughout the District was **0.57** students per single-family home.

The highest ratios of students per occupied home were found in the following subdivisions:

Planning Unit	Development	Ratio
2A	Bee Creek Ranchettes	3.00
3G	Meadowfox Estates	2.17
3D	Destiny Hills	1.71
2A	Tiburon Hills	1.25
5A	Lake Ponte - Canyon Vista	1.19
5A	Lake Pointe - The Estates	1.08
10C/12B	Reserve at Hudson Bend	1.08
9A	Lakeway	1.07
6C	The Enclave at Kollmeyer Springs	1.00
5B	Ridge at Alta Vista	1.00
2A	Windy Walk Estates	1.00

The ***lowest ratios*** were found in the following subdivisions:

Planning Unit	Development	Ratio
10A	Buffalo Gap	0.00
8E	Henning Heights	0.00
9F	Lochan Ora Addition	0.00
8B	Retama Garden Homes	0.00
2C	Rough Hollow - The Overlook	0.00
2C	Rough Hollow - The Woodlands	0.00
10C	La Hacienda Estates RV Park	0.06
9C	Lake Chandon	0.08

Such data are helpful in understanding why students are more dense in specific locations and which neighborhoods are empty-nest areas. They also point to neighborhoods that are disproportionately oriented to older students or to young students. The ratios help to estimate the grade-groups that will live in these neighborhoods over time, and, most importantly, assist in establishing the potential ratio of students per grade-group for comparable new subdivisions and new apartment complexes.

Although these ratios are utilized to obtain projections of added students for all new subdivisions and Planning Units, it is necessary to continue evaluating long-term trends in the ratios, as they will change as a subdivision or apartment complex ages.

Ratios of Students per Household – Multi-Family Housing

In multi-family apartment complexes, the ratios of students per unit ranged from **0.03** to **0.17** in specific complexes, and the weighted average throughout the District was **0.11** students per apartment unit. Approximately 831 units of the 890 within the District are occupied (with an overall 93% occupancy rate), with 91 students residing in those apartments. Windsor at Bee Cave had the highest ratio of students per unit, at 0.17, while Falconhead and Marina Village at Lakeway, both had 0.03 students per occupied unit.

Historical Trends in Ratios

The ratios of students per occupied home is slightly higher this year than in past years, although this could be due to the particular subdivisions chosen for measurement. Over the past five years, the Districtwide ratios have ranged between 0.44 and 0.57, which are low for such a highly regarded district as Lake Travis I.S.D. As the District continues to be a desirable place for families with school-aged children, PASA anticipates the ratios of students per single-family home could continue to rise.

Lake Travis I.S.D.:
Ratio of Students per Single Family Home by Subdivision

Planning Unit	Subdivision	Street Name	Total Ratio	# of Students	# of Homes	PK-5th Students	PK-5th Ratio	6th-8th Students	6th-8th Ratio	9th-12th Students	9th-12th Ratio
11B	Apache Shores	Brass Buttons Trail	0.28	15	54	6	0.11	4	0.07	5	0.09
11D		Chisholm Trail	0.29	8	28	0	0.00	5	0.18	3	0.11
11E		White Dove Pass	0.48	10	21	5	0.24	2	0.10	3	0.14
		Whitebead Trail	0.74	14	19	10	0.53	0	0.00	4	0.21
		Branding Iron Pass	1.25	40	32	22	0.69	7	0.22	11	0.34
		Colt Dr	1.40	28	20	15	0.75	7	0.35	6	0.30
		Weighted Ratio: 0.66				0.33	0.33		0.14		0.18
		Percent by Grade Group:		115	174		50%		22%		28%
7E	Arbolago	Sendra Bonita	0.77	10	13	7	0.54	1	0.08	2	0.15
		Camino Arbolago	0.29	4	14	3	0.21	0	0.00	1	0.07
		Arroyo Claro	1.00	6	6	1	0.17	1	0.17	4	0.67
		Weighted Ratio: 0.61				0.33	0.33		0.06		0.21
		Percent by Grade Group:		20	33		55%		10%		35%
12A	Bebby's Ranch	Hornsby Hill Rd	0.18	4	22	4	0.18	0	0.00	0	0.00
			Weighted Ratio: 0.18				0.18		0.00		0.00
		Percent by Grade Group:		4	22		100%		0%		0%
3D	Bee Cave West	Avispa Way	0.29	4	14	0	0.00	1	0.07	3	0.21
		Cueva Circle	0.00	0	3	0	0.00	0	0.00	0	0.00
		Cueva Drive	0.22	2	9	1	0.11	0	0.00	1	0.11
		Weighted Ratio: 0.23				0.04	0.04		0.04		0.15
		Percent by Grade Group:		6	26		17%		17%		67%
2A	Bee Creek Ranchettes	Dill Cir	3.00	3	1	1	1.00	1	1.00	1	1.00
			Weighted Ratio: 3.00				1.00		1.00		1.00
		Percent by Grade Group:		3	1		33%		33%		33%
10A	Bella Strada	Bella Strada Cove	0.17	1	6	0	0.00	1	0.17	0	0.00
			Weighted Ratio: 0.17				0.00		0.17		0.00
		Percent by Grade Group:		1	6		0%		100%		0%

Lake Travis I.S.D.:
Ratio of Students per Single Family Home by Subdivision

Planning Unit	Subdivision	Street Name	Total Ratio	# of Students	# of Homes	PK-5th Students Ratio	6th-8th Students Ratio	9th-12th Students Ratio
3D	Belvedere	Flagler	0.54	7	13	0.46	0	1
		Lynchburg	0.77	10	13	0.46	2	2
		Glenville Cv	1.20	6	5	0.80	1	1
		Bellancia	1.50	3	2	1.50	0	0
		Weighted Ratio:	0.79			0.58	0.09	0.12
		Percent by Grade Group:		26	33	73%	12%	15%
1B	Big Bee Creek	Lake Drive Rd	0.00	0	4	0.00	0	0
		Oak Ridge Dr	0.45	5	11	0.09	3	1
		Cory Ln	0.00	0	2	0.00	0	0
		Weighted Ratio:	0.29			0.06	0.18	0.06
		Percent by Grade Group:		5	17	20%	60%	20%
9E	Brooks Hollow	Brooks Hollow Rd (800-1113)	0.42	5	12	0.00	1	4
		Weighted Ratio:	0.42			0.00	0.08	0.33
		Percent by Grade Group:		5	12	0%	20%	80%
10A	Buffalo Gap	Buffalo Gap Rd (1488-1899)	0.00	0	10	0.00	0	0
		Weighted Ratio:	0.00			0.00	0.00	0.00
		Percent by Grade Group:		0	10	0%	0%	0%
6A	Canyonlands at Cardinal Hills	Delsie	0.14	2	14	0.07	1	0
		Sledge	0.16	4	25	0.12	0	1
		Barrie	0.39	14	36	0.28	2	2
		Joseph	0.21	5	24	0.13	2	0
		Weighted Ratio:	0.25			0.17	0.05	0.03
		Percent by Grade Group:		25	99	68%	20%	12%
11C	Cardinal Hill Estates II	Scott	2.00	4	2	1.00	2	0
		Blanchard	0.29	2	7	0.29	0	0
		Kinsey	0.00	0	4	0.00	0	0
		Richerson	0.00	0	5	0.00	0	0
		Weighted Ratio:	0.33			0.22	0.11	0.00
		Percent by Grade Group:		6	18	67%	33%	0%

Lake Travis I.S.D.:
Ratio of Students per Single Family Home by Subdivision

Planning Unit	Subdivision	Street Name	Total Ratio	# of Students	# of Homes	PK-5th Students	PK-5th Ratio	6th-8th Students	6th-8th Ratio	9th-12th Students	9th-12th Ratio	
9E	Cedar Glen	Oak Glen	0.00	0	5	0	0.00	0	0.00	0	0.00	
		Oak Bluff	0.00	0	15	0	0.00	0	0.00	0	0.00	
		Crescent Bluff (100-214)	0.19	4	21	2	0.10	0	0.00	2	0.10	
		Weighted Ratio: 0.15										0.08
	Percent by Grade Group:			4	26		50%		0%		50%	
8G	Cherry Mountain	Wild Cherry	1.00	1	1	0	0.00	0	0.00	1	1.00	
		Peak Lookout	0.50	6	12	1	0.08	1	0.08	4	0.33	
		Weighted Ratio: 0.54										0.38
		Percent by Grade Group:	7	13		14%		14%		14%		71%
12A	Commanders Point	Agarita Rd	0.67	2	3	1	0.33	1	0.33	0	0.00	
		Weighted Ratio: 0.67										0.33
	Percent by Grade Group:			2	3		50%		50%		0%	
10A 10B	Costa Bella	Bella Cima Dr	0.77	20	26	12	0.46	4	0.15	4	0.15	
		Bella Riva Dr	0.70	7	10	5	0.50	1	0.10	1	0.10	
		Bella Vista Cv	0.17	1	6	0	0.00	0	0.00	1	0.17	
		Weighted Ratio: 0.67										0.12
	Percent by Grade Group:			28	42		61%		18%		21%	
6A	Courtyard at the Preserve	Cypress Knee	0.38	10	26	6	0.23	2	0.08	2	0.08	
		White Magnolia Cir	0.75	38	51	14	0.27	11	0.22	13	0.25	
		Juniper Berry	0.73	8	11	3	0.27	2	0.18	3	0.27	
		Weighted Ratio: 0.64										0.26
	Percent by Grade Group:			56	88		41%		27%		32%	
1B	Crosswind	Tradewind Dr	0.42	5	12	2	0.17	2	0.17	1	0.08	
		Crosswind Cir	1.00	3	3	0	0.00	1	0.33	2	0.67	
		Weighted Ratio: 0.53										0.20
	Percent by Grade Group:			8	15		25%		38%		38%	

Lake Travis I.S.D.:
Ratio of Students per Single Family Home by Subdivision

Planning Unit	Subdivision	Street Name	Total Ratio	# of Students	# of Homes	PK-5th Students Ratio	6th-8th Students Ratio	9th-12th Students Ratio
3D	Destiny Hills	Destiny Cv	0.67	2	3	1	0.33	0
		Destiny Hills Dr	2.50	10	4	5	1.25	2
		Weighted Ratio:	1.71			0.86	0.57	0.29
		Percent by Grade Group:		12	7	50%	33%	17%
1B	Edgewater Beach	Timberline Dr	0.00	0	4	0	0.00	0
		Overlook Cir	0.29	2	7	0	0.00	0
		Edgewater Dr	0.08	1	13	1	0.08	0
		Weighted Ratio:	0.13			0.04	0.08	0.00
		Percent by Grade Group:		3	24	33%	67%	0%
6C	The Enclave at Kollmeyer Springs	Kollmeyer Circle	1.00	11	11	2	0.18	3
			Weighted Ratio:	1.00		0.18	0.55	0.27
		Percent by Grade Group:		11	11	18%	55%	27%
8A	Falconhead - The Champions	Bat Hawk Circle	1.04	25	24	11	0.46	8
		Bat Falcon Dr	0.83	19	23	9	0.39	7
		Hookbilled Kite	0.73	19	26	12	0.46	2
		Spillman Ranch Loop	0.79	92	116	54	0.47	25
			Weighted Ratio:	0.82			0.46	0.14
		Percent by Grade Group:		155	189	55%	17%	27%
8A	Falconhead - The Heights	Heron Bay Cove	1.25	10	8	9	1.13	0
		Sugarloaf Dr	0.56	9	16	1	0.06	6
		Myrtle Beach Dr	0.83	5	6	4	0.67	1
		Piper Glen Dr	0.57	4	7	2	0.29	1
		Weighted Ratio:	0.76			0.43	0.11	0.22
		Percent by Grade Group:		28	37	57%	14%	29%
8A	Falconhead - The Legends	Gyrfalcon Cove	0.27	4	15	4	0.27	0
			Weighted Ratio:	0.27		0.27	0.00	0.00
		Percent by Grade Group:		4	15	100%	0%	0%

Lake Travis I.S.D.:
Ratio of Students per Single Family Home by Subdivision

Planning Unit	Subdivision	Street Name	Total Ratio	# of Students	# of Homes	PK-5th Students	PK-5th Ratio	6th-8th Students	6th-8th Ratio	9th-12th Students	9th-12th Ratio
8A	Falconhead - The Links	American Kestrel Dr	0.58	21	36	9	0.25	4	0.11	8	0.22
		Coopers Hawk Cove	0.20	3	15	2	0.13	0	0.00	1	0.07
		Weighted Ratio:	0.47				0.22		0.08		0.18
		Percent by Grade Group:		24	51		46%		17%		38%
8A	Falconhead - St Andrews	Broadwinged Hawk Dr (14300-14532)	0.96	27	28	12	0.43	8	0.29	7	0.25
		Broadwinged Hawk Cove (3700-3720)	0.29	2	7	2	0.29	0	0.00	0	0.00
		Weighted Ratio:	0.83				0.40		0.23		0.20
		Percent by Grade Group:		29	35		48%		28%		24%
8C	Falconhead - West	Vail Divide	0.72	38	53	23	0.43	7	0.13	8	0.15
		Swiss Alps Ct	0.14	1	7	1	0.14	0	0.00	0	0.00
		Mont Blanc	0.66	37	56	17	0.30	8	0.14	12	0.21
		Snowdonia Cv	0.71	10	14	5	0.36	1	0.07	4	0.29
		Weighted Ratio:	0.66				0.35		0.12		0.18
		Percent by Grade Group:		86	130		53%		19%		28%
8E	Henning Heights	Henning Dr	0.00	0	4	0	0.00	0	0.00	0	0.00
		Shane Landon	0.00	0	1	0	0.00	0	0.00	0	0.00
		Weighted Ratio:	0.00				0.00		0.00		0.00
		Percent by Grade Group:		0	5		0%		0%		0%
11C	Highland Club Village	Highland Dr (3700-4029)	0.08	1	13	0	0.00	1	0.08	0	0.00
		Lago Vista Dr	0.36	4	11	3	0.27	1	0.09	0	0.00
		Weighted Ratio:	0.21				0.13		0.08		0.00
		Percent by Grade Group:		5	24		60%		40%		0%
8B	Hills of Lakeway	Autumn Oaks Dr	0.69	22	32	8	0.25	7	0.22	7	0.22
		Stillmeadow Dr (1-75)	0.60	25	42	7	0.17	8	0.19	10	0.24
		Drifting Wind Run	0.85	17	20	9	0.45	3	0.15	5	0.25
		Falling Oaks Trl	0.67	12	18	5	0.28	2	0.11	5	0.28
		Hedgebrook Way	0.61	17	28	8	0.29	2	0.07	7	0.25
		Weighted Ratio:	0.66				0.26		0.16		0.24
		Percent by Grade Group:		93	140		40%		24%		37%

Lake Travis I.S.D.:
Ratio of Students per Single Family Home by Subdivision

Planning Unit	Subdivision	Street Name	Total Ratio	# of Students	# of Homes	PK-5th Students Ratio	6th-8th Students Ratio	9th-12th Students Ratio
10C	La Hacienda Estates RV Park	5220 Hudson Bend Road <i>Weighted Ratio: 0.06</i>	0.06	6	104	0.02	0.02	0.02
		Percent by Grade Group:		6	104	33%	33%	33%
9C	Lake Chandon	Lake Chandon <i>Weighted Ratio: 0.08</i>	0.08	1	12	0.08	0.00	0.00
		Percent by Grade Group:		1	12	100%	0%	0%
2E	Lake Country Estates	Travis Vista Raynham Hill <i>Weighted Ratio: 0.27</i>	0.43	3	7	0.29	0.14	0.00
		Percent by Grade Group:		3	11	67%	33%	0%
5A	Lake Pointe - Canyon Vista	Pointe View Dr <i>Weighted Ratio: 1.19</i>	1.19	51	43	0.86	0.21	0.12
		Percent by Grade Group:		51	43	73%	18%	10%
5A	Lake Pointe - The Estates	Carlsbad Dr Fairfax Ridge Pl Loomis Dr <i>Weighted Ratio: 1.08</i>	1.05	62	59	0.63	0.22	0.20
		Percent by Grade Group:		109	101	54%	23%	23%
5A	Lake Pointe - The Landing	Sterling Panorama Ct Sterling Panorama Terrace <i>Weighted Ratio: 0.90</i>	1.08	13	12	0.58	0.50	0.00
		Percent by Grade Group:		44	49	52%	36%	11%
5A	Lake Pointe - The Preserve	Windswept Dr Lake Stone Dr (11900-12220) Nevada Dr <i>Weighted Ratio: 0.77</i>	0.65	15	23	0.26	0.26	0.13
		Percent by Grade Group:		50	65	66%	24%	10%

Lake Travis I.S.D.:
Ratio of Students per Single Family Home by Subdivision

Planning Unit	Subdivision	Street Name	Total Ratio	# of Students	# of Homes	PK-5th Students Ratio	6th-8th Students Ratio	9th-12th Students Ratio
5A	Lake Pointe - The Setting	Emerald Falls	0.64	27	42	18	6	3
		Sundown Dr	0.65	11	17	5	5	1
		Cascade Falls Dr	1.00	36	36	17	4	15
		Weighted Ratio: 0.78				0.42	0.16	0.20
		Percent by Grade Group:		74	95	54%	20%	26%
5A	Lake Pointe - Vista Pointe	Palisades Pointe Ln	1.05	23	22	7	6	10
		Sea Eagle View	0.96	25	26	15	6	4
		Pleasant Panorama View	0.77	30	39	12	9	9
		Weighted Ratio: 0.90				0.39	0.24	0.26
		Percent by Grade Group:		78	87	44%	27%	29%
7A 7B	Lakeway	S El Dorado	0.08	2	25	2	0	0
		Sattilo Ct	0.21	3	14	3	0	0
		White Sands Dr	0.46	11	24	4	5	2
		Weighted Ratio: 0.25				0.14	0.08	0.03
		Percent by Grade Group:		16	63	56%	31%	13%
9A	Lakeway	Lakeway Blvd	1.39	61	44	21	18	22
		Schooner Dr	0.96	26	27	16	6	4
		Tallstar Dr	0.47	9	19	5	2	2
		Weighted Ratio: 1.07				0.47	0.29	0.31
		Percent by Grade Group:		96	90	44%	27%	29%
9B	Lakeway	Eagle	0.79	33	42	17	9	7
		Dragon	0.94	17	18	9	2	6
		Mariner	0.22	8	36	3	1	4
		Weighted Ratio: 0.60				0.30	0.13	0.18
		Percent by Grade Group:		58	96	50%	21%	29%
9C	Lakeway	Biscayne	0.39	9	23	3	1	5
		Vanguard	0.39	24	61	12	3	9
		Blue Jay Dr	0.60	12	20	6	2	4
		Weighted Ratio: 0.43				0.20	0.06	0.17
		Percent by Grade Group:		45	104	47%	13%	40%

Lake Travis I.S.D.:
Ratio of Students per Single Family Home by Subdivision

Planning Unit	Subdivision	Street Name	Total Ratio	# of Students	# of Homes	PK-5th Students	PK-5th Ratio	6th-8th Students	6th-8th Ratio	9th-12th Students	9th-12th Ratio
9D	Lakeway	Porpoise	0.52	12	23	6	0.26	3	0.13	3	0.13
		Bermuda	0.30	7	23	3	0.13	1	0.04	3	0.13
		Sunfish	2.00	28	14	14	1.00	4	0.29	10	0.71
		Weighted Ratio: 0.78				0.38			0.13		0.27
		Percent by Grade Group:		47	60		49%		17%		34%
9E	Lakeway	Challenger (905-1240)	0.24	21	87	6	0.07	6	0.07	9	0.10
		Electra	0.32	13	41	3	0.07	2	0.05	8	0.20
		Snapper	0.71	12	17	2	0.12	4	0.24	6	0.35
		Weighted Ratio: 0.32				0.08			0.08		0.16
		Percent by Grade Group:		46	145		24%		26%		50%
12A	Lakewind Estates	Lego Viento	0.67	16	24	4	0.17	3	0.13	9	0.38
		Laguna Grande	0.71	5	7	4	0.57	0	0.00	1	0.14
			Weighted Ratio: 0.68				0.26			0.10	
		Percent by Grade Group:		21	31		38%		14%		48%
6D	Laws Addition	Ameno Dr	1.80	9	5	2	0.40	2	0.40	5	1.00
		Far Vela Ln	0.63	10	16	4	0.25	4	0.25	2	0.13
			Weighted Ratio: 0.90				0.29			0.29	
		Percent by Grade Group:		19	21		32%		32%		37%
9F	Lochan Ora Addition	Casablanca Ln	0.00	0	3	0	0.00	0	0.00	0	0.00
			Weighted Ratio: 0.00				0.00		0.00		0.00
		Percent by Grade Group:		0	3		0%		0%		0%
7D	Lohmans Crossing Estates	Sailors Run	1.18	20	17	7	0.41	4	0.24	9	0.53
		Mooring Cir	0.67	26	39	12	0.31	7	0.18	7	0.18
		Deerhorn Ct	0.32	6	19	1	0.05	3	0.16	2	0.11
		Weighted Ratio: 0.69				0.27			0.19		0.24
		Percent by Grade Group:		52	75		38%		27%		35%

Lake Travis I.S.D.:
Ratio of Students per Single Family Home by Subdivision

Planning Unit	Subdivision	Street Name	Total Ratio	# of Students	# of Homes	PK-5th Students	PK-5th Ratio	6th-8th Students	6th-8th Ratio	9th-12th Students	9th-12th Ratio
11A	Maravilla	Kevin	0.26	5	19	2	0.11	1	0.05	2	0.11
		Pamela Ct	0.15	2	13	2	0.15	0	0.00	0	0.00
		Lariat Trl	0.44	11	25	1	0.04	4	0.16	6	0.24
		Sutton Dr	0.67	2	3	0	0.00	0	0.00	2	0.67
		Weighted Ratio: 0.33					0.08		0.08		0.17
		Percent by Grade Group:		20	60				25%		50%
1A	Marina Club Villas	Cat Hollow Club Dr (600-1309)	0.11	4	36	2	0.06	1	0.03	1	0.03
		Weighted Ratio: 0.11					0.06		0.03		0.03
		Percent by Grade Group:		4	36				50%		25%
3G	Meadowfox Estates	Lone Rider Trl (13700-13951)	2.17	13	6	5	0.83	4	0.67	4	0.67
		Weighted Ratio: 2.17					0.83		0.67		0.67
		Percent by Grade Group:		13	6				38%		31%
10A	Mountain Acres	Debba Dr (15700-15816)	0.25	2	8	1	0.13	1	0.13	0	0.00
		Weighted Ratio: 0.25					0.13		0.13		0.00
		Percent by Grade Group:		2	8				50%		0%
7E	North Lakeway Village	Lambardia	0.00	0	4	0	0.00	0	0.00	0	0.00
		Bellagio	0.73	11	15	6	0.40	3	0.20	2	0.13
		Lake Como	0.14	1	7	1	0.14	0	0.00	0	0.00
		Montalcino	0.20	1	5	0	0.00	1	0.20	1	0.20
		Weighted Ratio: 0.42					0.23		0.13		0.06
		Percent by Grade Group:		13	31				54%		15%
1A	Old Ferry	Whitney Dr	0.29	5	17	1	0.06	2	0.12	2	0.12
		Leatha Ln	0.00	0	13	0	0.00	0	0.00	0	0.00
		Lakeview Dr	0.09	2	23	0	0.00	0	0.00	2	0.09
		Weighted Ratio: 0.13					0.02		0.04		0.08
		Percent by Grade Group:		7	53				14%		57%

Lake Travis I.S.D.:
Ratio of Students per Single Family Home by Subdivision

Planning Unit	Subdivision	Street Name	Total Ratio	# of Students	# of Homes	PK-5th Students	PK-5th Ratio	6th-8th Students	6th-8th Ratio	9th-12th Students	9th-12th Ratio	
4	Preserve at Barton Creek	Top of Texas Trl	1.00	7	7	5	0.71	2	0.29	0	0.00	
		Texas Wildlife Trl	0.53	8	15	5	0.33	2	0.13	1	0.07	
		Native Texas Trl	1.00	3	3	1	0.33	1	0.33	1	0.33	
		Weighted Ratio: 0.72										0.08
		Percent by Grade Group:		18	25		61%		28%		11%	
10C 12B	Reserve at Hudson Bend	Leguna Cliff Ln	1.06	34	32	21	0.66	8	0.25	5	0.16	
		French Harbour Ct	1.20	6	5	2	0.40	3	0.60	1	0.20	
		Weighted Ratio: 1.08										0.16
		Percent by Grade Group:		40	37		58%		28%		15%	
8B	Retama Garden Homes	Retama	0.00	0	53	0	0.00	0	0.00	0	0.00	
		Weighted Ratio: 0.00										0.00
		Percent by Grade Group:		0	53		0%		0%		0%	
5B	Ridge at Alta Vista	Sunrise Ridge	1.00	18	18	7	0.39	6	0.33	5	0.28	
		Weighted Ratio: 1.00										0.28
		Percent by Grade Group:		18	18		39%		33%		28%	
2C	Rough Hollow - East Rim	Rocky Coast	0.00	0	2	0	0.00	0	0.00	0	0.00	
		Feritti	0.33	3	9	2	0.22	0	0.00	1	0.11	
		Weighted Ratio: 0.27										0.09
		Percent by Grade Group:		3	11		67%		0%		33%	
2C	Rough Hollow - The Bluffs	Bisset Ct	0.40	2	5	0	0.00	1	0.20	1	0.20	
		Weighted Ratio: 0.40										0.20
		Percent by Grade Group:		2	5		0%		50%		50%	
2C	Rough Hollow - The Overlook	Bonaire Ct	0.00	0	1	0	0.00	0	0.00	0	0.00	
		Weighted Ratio: 0.00										0.00
		Percent by Grade Group:		0	1		0%		0%		0%	

Lake Travis I.S.D.:
Ratio of Students per Single Family Home by Subdivision

Planning Unit	Subdivision	Street Name	Total Ratio	# of Students	# of Homes	PK-5th Students Ratio	6th-8th Students Ratio	9th-12th Students Ratio
2C	Rough Hollow - Water's Edge	Stone Shadow Cv	4.00	4	1	0	3	1
		Canyon Turn Trl	0.25	2	8	2	0	0
		Rought Hollow Cv	0.00	0	2	0	0	0
		Weighted Ratio:	0.55			0.18	0.27	0.09
		Percent by Grade Group:		6	11	33%	50%	17%
2C	Rough Hollow - The Woodlands	Kildrummy	0.00	0	2	0	0	0
		Duffy	0.00	0	6	0	0	0
		Weighted Ratio:	0.00			0.00	0.00	0.00
		Percent by Grade Group:		0	8	0%	0%	0%
3E	Saddletree Ranch	Saddlehorn (106-611)	0.72	34	47	15	8	11
		Winchester Dr (300-408)	0.87	13	15	8	5	0
		Weighted Ratio:	0.76			0.37	0.21	0.18
		Percent by Grade Group:		47	62	49%	28%	23%
1B	Siesta Shores	Debco (900-1109)	0.27	4	15	2	1	1
		Windy Shores Loop	0.15	5	34	3	0	2
		Moon Dance	0.17	2	12	1	1	0
		Weighted Ratio:	0.18			0.10	0.03	0.05
		Percent by Grade Group:		11	61	55%	18%	27%
6A	Terrace at the Preserve	Mountain Terrace	0.33	2	6	0	0	2
		Stone Terrace	0.43	6	14	3	1	2
		Green Terrace	0.21	3	14	3	0	0
		Weighted Ratio:	0.32			0.18	0.03	0.12
		Percent by Grade Group:		11	34	55%	9%	36%
2A	Tiburon Hills	Bertram Ln	1.25	5	4	1	1	3
		Weighted Ratio:	1.25			0.25	0.25	0.75
		Percent by Grade Group:		5	4	20%	20%	60%

Lake Travis I.S.D.:
Ratio of Students per Single Family Home by Subdivision

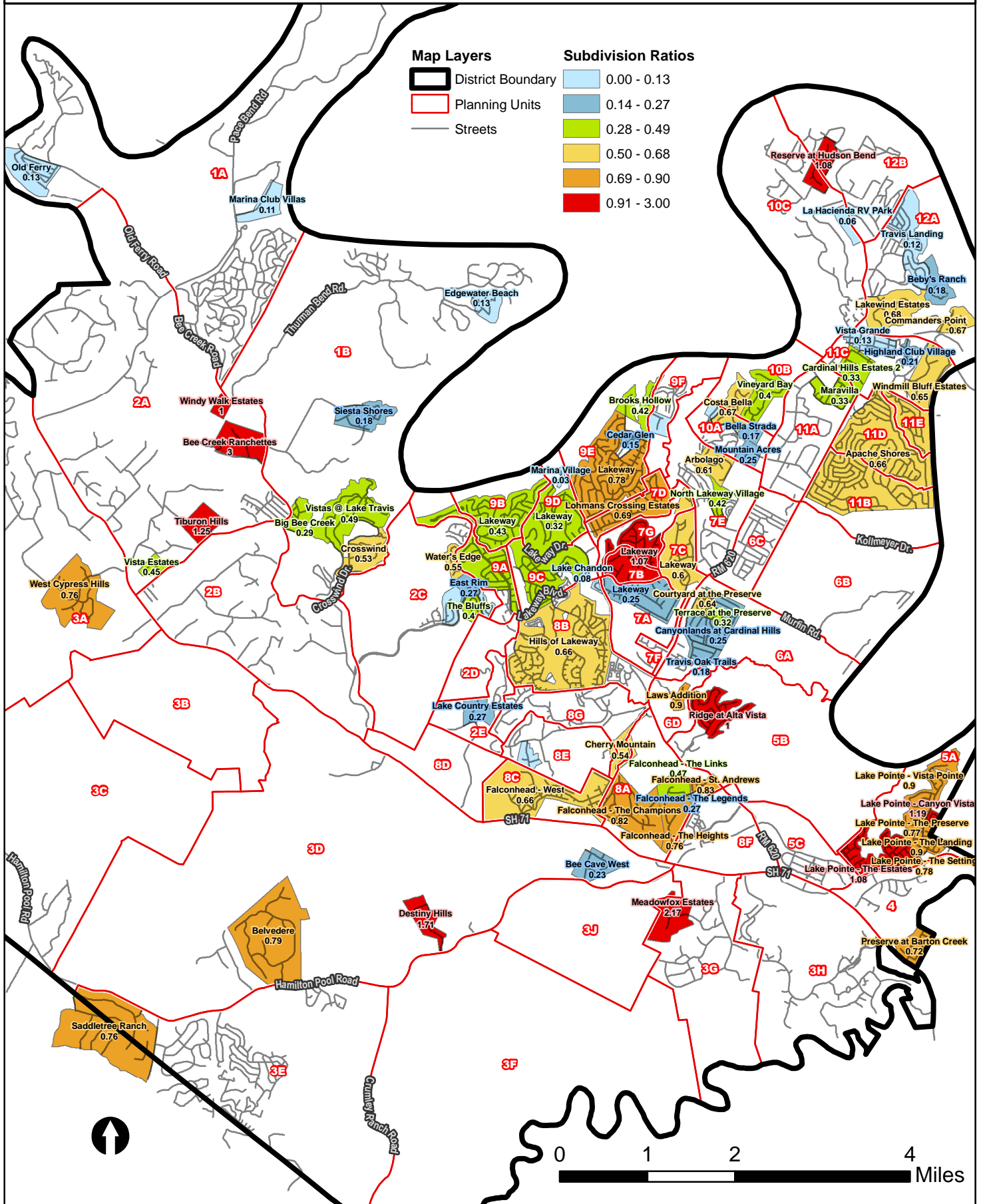
Planning Unit	Subdivision	Street Name	Total Ratio	# of Students	# of Homes	PK-5th Students Ratio	6th-8th Students Ratio	9th-12th Students Ratio	
12A	Travis Landing	Arroyo Rd	0.17	4	24	1	2	1	
		Lands End	0.06	2	36	1	1	0	
		Rainbow One	0.17	5	30	2	2	1	
		Weighted Ratio: 0.12				0.04	0.06	0.02	
	Percent by Grade Group:			11	90		36%	45%	18%
6A	Travis Oak Trails	Mettle Dr	0.10	2	21	0	0	2	
		Parker Bend	0.00	0	12	0	0	0	
		Strader Circle	0.55	6	11	2	1	3	
		Weighted Ratio: 0.18				0.05	0.02	0.11	
	Percent by Grade Group:			8	44		25%	13%	63%
10B	Vineyard Bay	Fontaine Ave	0.45	13	29	6	4	3	
		Canard Cir	0.00	0	6	0	0	0	
		Chateau Ave	0.44	8	18	4	1	3	
		Weighted Ratio: 0.40				0.19	0.09	0.11	
	Percent by Grade Group:			21	53		48%	24%	29%
2A	Vista Estates	Vista Estates Dr	0.50	2	4	1	0	1	
		Vista Estates Ct	0.43	3	7	1	1	1	
		Weighted Ratio: 0.45				0.18	0.09	0.18	
			Percent by Grade Group:			5	11		40%
10C	Vista Grande	Pescado	0.14	1	7	0	1	0	
		Conejo	0.00	0	3	0	0	0	
		Culebra	0.33	1	3	1	0	0	
		Gavilan	0.00	0	3	0	0	0	
	Weighted Ratio: 0.13					0.06	0.06	0.00	
	Percent by Grade Group:			2	16		50%	50%	0%
1B	Vistas at Lake Travis	Lakehurst Lp	0.27	7	26	2	1	4	
		Lakehurst Rd	0.83	19	23	9	5	5	
		Fisher	0.00	0	2	0	0	0	
		Crosswinds	0.38	3	8	0	1	2	
	Weighted Ratio: 0.49					0.19	0.12	0.19	
	Percent by Grade Group:			29	59		38%	24%	38%

Lake Travis I.S.D.:
Ratio of Students per Single Family Home by Subdivision

Planning Unit	Subdivision	Street Name	Total Ratio	# of Students	# of Homes	PK-5th Students	PK-5th Ratio	6th-8th Students	6th-8th Ratio	9th-12th Students	9th-12th Ratio
3A	West Cypress Hills	Rose Grass Ln	0.86	12	14	3	0.21	3	0.21	6	0.43
		Cypress Ranch	0.54	14	26	6	0.23	4	0.15	4	0.15
		Texas Blue Bell	1.02	42	41	23	0.56	12	0.29	7	0.17
		Rock Wren	0.18	2	11	2	0.18	0	0.00	0	0.00
		Weighted Ratio: 0.76		70	92		0.37		0.21		0.18
		Percent by Grade Group:					49%		27%		24%
11C	Windmill Bluff Estates	Windy Harbor Dr	0.44	4	9	0	0.00	1	0.11	3	0.33
		Cloudy Ridge Rd	0.92	12	13	5	0.38	2	0.15	5	0.38
		Fallen Timber Dr	0.25	1	4	1	0.25	0	0.00	0	0.00
		Weighted Ratio: 0.65		17	26		0.23		0.12		0.31
		Percent by Grade Group:					35%		18%		47%
2A	Windy Walk Estates	Windy Walk Cove	1.00	3	3	2	0.67	1	0.33	0	0.00
		Weighted Ratio: 1.00		3	3		0.67		0.33		0.00
		Percent by Grade Group:		3	3		67%		33%		0%
		TOTAL:		1,973	3,487	962		460		551	
		January 2011, TOTAL WEIGHTED RATIO: 0.57					0.28		0.13		0.16
		PERCENT BY GRADE GROUP (WEIGHTED):				0.49		0.23		0.28	

Ratios of Students per Occupied Housing Unit

By Subdivision



Lake Travis I.S.D.: Trends in Ratios of Students per Household



Planning Unit	Subdivision	October 2006	July 2008	November 2009	January 2011
5B	Alta Vista - The Ridge	0.91			
11B, 11D, 11E	Apache Shores	0.61	0.34		0.66
7E	Arbolago		0.38	0.39	0.61
12A	Beby's Ranch				0.18
3D	Bee Cave West	0.60		0.62	0.23
2B	Bee Creek Estates			0.08	
2A	Bee Creek Ranchettes				3.00
10A	Bella Strada				0.17
3D	Belvedere				0.79
1B	Big Bee Creek			0.20	0.29
1B	Briarcliff	0.35	0.35		
9E	Brooks Hollow			0.20	0.42
10A	Buffalo Gap				0.00
6A	Canyonlands at Cardinal Hills				0.25
6A	Cardinal Hills	0.23	0.26		
6C	Cardinal Hills	0.13	0.13		
11A	Cardinal Hills Estates	0.50	0.42	0.45	
11C	Cardinal Hill Estates II				0.33
9E	Cedar Glen			0.20	0.15
8A	Cherry Mountain	0.46		0.42	0.54
12A	Commanders Point	0.11			0.67
10A & 10B	Costa Bella			0.36	0.67
6A	Courtyard at the Preserve	0.27		0.34	0.64
9E	Cove at Lakeway		1.08		
1B	Crosswind				0.53
3D	Destiny Hills				1.71
1B	Edgewater Beach				0.13
6C	The Enclave at Kollmeyer Springs				1.00
5B	Enclave North		0.13		
5B	Enclave South		0.59		
8G	Estates at Flintrock			0.44	
8A	Falconhead - Saint Andrews	0.33	0.33	0.69	0.83
8A	Falconhead - The Champions	0.49	0.49	0.83	0.82
8A	Falconhead - The Heights	0.88	0.88	0.75	0.76
8A	Falconhead - The Legends	0.08	0.08	0.40	0.27
8A	Falconhead - The Links	0.42	0.42	0.48	0.47
8C	Falconhead - West				0.66
8B	Flint Rock at Hurst Creek - Flint Rock Falls	0.44	0.44		
8D	Flint Rock at Hurst Creek - Villas at Flintrock	0.04	0.04		
2D	Flint Rock Estates	1.50			
7A	Glen Heather	0.56			
3C	Hamilton Hills	0.67			
8B	Henning Heights	0.00			0.00
11A	Highland Club Village	0.22		0.15	
11C	Highland Club Village	0.18			0.21
8D	Hills of Lakeway			0.47	0.66
3E	Hilltop Manor, Twin Lake Hills, Valley Lake Hills	0.29			
3G	The Homestead	0.61	0.61	0.47	
12B	Hudson Bend Colony		0.14	0.13	
10C	La Hacienda Estates		0.83		
10C	La Hacienda Estates RV Park				0.06
9C	Lake Chandon			0.00	0.08
2D	Lake Country Estates	0.40	0.40	0.67	0.27
6C	Lake Oak Estates	0.49			
5A	Lake Pointe - Canyon Vista	0.77	0.89	1.00	1.19
5A	Lake Pointe - The Estates	1.06	0.91	1.05	1.08
5A	Lake Pointe - The Landing	0.31	1.40	0.88	0.90
5A	Lake Pointe - The Preserve	0.31	0.56	0.50	0.77
5A	Lake Pointe - The Setting	0.70	0.57	0.64	0.78
5A	Lake Pointe - Vista Pointe	1.03	1.03	1.21	0.90
7E	Lakeside at North Lakeway			0.00	

"Green" subdivisions indicate continued increases in the number of students per home.
 "Yellow" subdivisions show areas where ratios are declining.

Lake Travis I.S.D.: Trends in Ratios of Students per Household



Planning Unit	Subdivision	October 2006	July 2008	November 2009	January 2011
5B	Alta Vista - The Ridge	0.91			
7A	Lakeway		0.33	0.36	0.25
7B	Lakeway			0.43	0.25
7C	Lakeway		0.19	0.19	
9A	Lakeway				1.07
9B	Lakeway				0.60
9C	Lakeway				0.43
9D	Lakeway		0.33	0.25	0.78
9E	Lakeway		0.54	0.45	0.32
12A	Lakewind Estates	0.71			0.68
1C	Lakewood Estates	0.31	0.31	0.29	
6D	Laws Addition				0.90
3A	Lick Creek Ranch	0.30	0.30		
7D	Lohmans Crossing Estates				0.69
2D	Majestic Hills Ranchettes	0.63			
11A	Maravilla		0.10	0.35	0.33
1A	Marina Club Villas				0.11
3G	Meadow Fox Estates	0.00		2.33	2.17
10A	Mountain Acres	0.44			0.25
7E	North Lakeway Village				0.42
1A	Old Ferry				0.13
7E	Overlook at North Lakeway			0.25	
2A	Pale Face Ranch			0.12	
4	Preserve at Barton Creek	0.82	0.82	0.54	0.72
10C, 12B	Reserve at Hudson Bend			1.50	1.08
8B	Retama Garden Homes			0.00	0.00
5B	Ridge at Alta Vista			0.65	1.00
2C	Rough Hollow			0.28	
2C	Rough Hollow - East Rim				0.27
2C	Rough Hollow - The Bluffs				0.40
2C	Rough Hollow - The Overlook				0.00
2C	Rough Hollow - Water's Edge				0.55
2C	Rough Hollow - The Woodlands				0.00
3F	Saddletree Ranch	0.89		0.63	0.76
1C	Siesta Shores	0.21	0.21	0.16	0.18
3H	Spanish Oaks		0.64		
6A	Terrace at the Preserve			0.14	0.32
2A	Tiburon Hills				1.25
12A	Travis Landing			0.12	0.12
6A	Travis Oak Trails	0.44		0.20	0.18
2B	Travis Settlement			0.64	
4	The Uplands	0.97			
3E	Twin Lake Hills		0.16		
8G	Villas at Flintrock			0.02	
8B	Villas at the Hills			0.10	
10B	Vineyard Bay	0.19	0.19		0.40
2A	Vista Estates				0.45
11C	Vista Grande	0.38		0.10	0.13
1B	Vistas at Lake Travis				0.49
3E	West Cave Estates	0.56			
3A	West Cypress Hills	0.59	0.59	0.56	0.76
8G	Wild Cherry			0.42	
11A	Windmill Bluff Estates		1.00	0.57	0.65
2A	Windy Walk Estates				1.00
12B	Woods of Lake Travis			0.45	
8B	Yaupon Creek	0.06		0.03	
	Districtwide Ratio:	0.48	0.45	0.44	0.57

"Green" subdivisions indicate continued increases in the number of students per home.
 "Yellow" subdivisions show areas where ratios are declining.