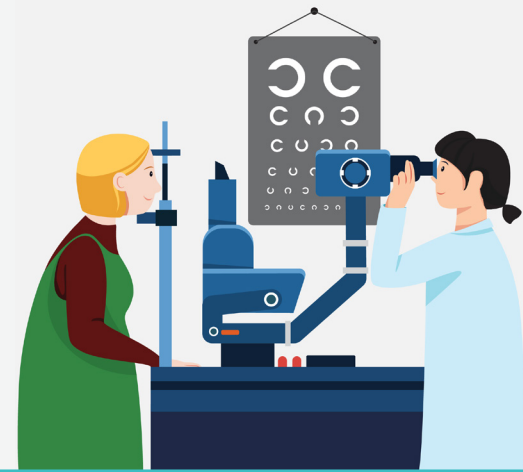


ABOUT VISION

Vision insurance provides coverage for routine eye examinations and can help with covering some of the costs for eyeglass frames, lenses or contact lenses.

For full plan details, please visit your benefit website:

www.mybenefitshub.com/laketravisisd



With your Davis Vision Preferred Provider Organization (PPO) Plan you can:

- Go to any licensed Davis vision provider and receive coverage. Just remember your benefit dollars go further when you stay in network.
- Choose from a large network of ophthalmologists, optometrists and opticians, from private practices to retailers like Costco® Optical, Walmart®, Sam's Club® and Visionworks®.

Vision	
Employee Only	\$6.44
Employee and Spouse	\$12.24
Employee and Child(ren)	\$12.88
Employee and Family	\$18.96

In-Network Covered Benefits

Frequency

There are no claims for you to file when you go to an in-network Davis vision provider. Simply pay any copays or member out of pocket amount (MOOP) and, if applicable, any amount over your frame/contact allowance at the time of service.

Eye exam

- Eye health exam, dilation, prescription, and refraction for glasses: Covered in full after a \$10 copay
- Retinal imaging: Up to a \$39 copay on routine retinal screening when performed by a private practitioner.

Once every
12 months

Frame

- Allowance: \$130 OR
- Exclusive Collection Frame Copay (in lieu of Allowance) for 3 tiers of the Collection: Premier: Covered / Covered / Covered

Participating private practice providers typically do not display the Collection but are contractually required to maintain a comparable selection (in both quantity and quality) of frames that would be covered, with no additional member out-of-pocket expense. Special lens designs, materials, powers and frames may require additional cost. Collection is available at most participating independent provider offices. Collection is subject to change.

Once every
12 months

Standard corrective lenses

- Single vision, lined bifocal, lined trifocal, lenticular: Covered in full after \$25 eyewear copay.¹

Once every
12 months

Standard lens enhancements²

- Standard Polycarbonate (child up to age 18)³, Plastic tints/dyes, Solid and Gradient Tints: Covered in full
- Progressive Standard, Progressive Premium/Custom, Standard Polycarbonate (adult), UV coating, Scratch-resistant coatings, Anti-reflective, Photochromic, Blue Light filtering, Digital Single Vision, Polarized, High Index (1.67 / 1.74): Your cost will be limited to a member out of pocket (MOOP) amount that MetLife has negotiated for you. These amounts may be viewed after enrollment at metlife.com/mybenefits.

Once every
12 months

1. Materials co-pay applies to lenses and frames only, not contact lenses.

2. The above list highlights some of the most popular lens enhancements and is not a complete listing.

3. Polycarbonate lenses are covered for dependent children, monocular patients, and patients with prescriptions +/- 6.00 diopters or greater.

Contact lenses (instead of eyeglasses)⁴

- Contact fitting and evaluation: 15% Discount
- Elective lenses: \$130 allowance
- Necessary lenses: Covered in full with prior authorization
- Discounts:⁴
 - ◊ 15% off the amount over your contact lens allowance.
 - ◊ Same-day purchase of additional contacts: 15%
 - ◊ After-service purchase of additional contacts: 10%

Once every
12 months

We're here to help

Find a Davis Vision provider at www.metlife.com/vision and select 'Davis Vision by MetLife'.

For general questions at any time, call 1-833-EYE-LIFE (1-833-393-5433). Once your coverage is effective, visit our member website at www.metlife.com/mybenefits.

In-network value added features:

Additional savings on lens enhancements:⁵ Save an average of 20-25% over retail on all lens enhancements not otherwise covered under the Davis Vision Insurance program.

Additional savings on glasses and sunglasses:⁵ A 20% discount off the provider's usual and customary rate may be available. When buying additional complete pairs of eyeglasses or sunglasses on the same transaction as their primary benefit, members may receive 50% off the additional pair at Visionworks® and 30% off at other participating providers.

Additional savings on frames:⁵ 20% off any amount over your frames allowance.

Additional savings on contacts:⁵ 15% off any amount over your contact lens allowance. 15% same-day discount on additional contacts beyond your covered amount. 10% after-service discount on additional contacts beyond your covered amount.

Laser vision correction:⁵ Savings of 20%- 50% off the national average price of traditional LASIK are available at over 1,000 locations across our nationwide network of laser vision correction providers.

Free one-year breakage warranty: All Davis Collection eyeglasses come with a breakage warranty for repair or replacement of the frame and/or lenses for a period of one year from the date of delivery. The one-year breakage warranty applies only to Davis Collection frames and lenses installed in them. Warranty does not apply to non-Collection frames.

Hearing discounts:⁵ A National Hearing Network of hearing care professionals, featuring Your Hearing Network, offers Davis Vision members discounts on services, hearing aids and accessories. These discounts should be verified prior to service.

Out-of-network reimbursement

You pay for services and then submit a claim for reimbursement. The same benefit frequencies for in-network benefits apply. Once you enroll, visit www.metlife.com/mybenefits for detailed out-of-network benefits information.

- Eye exam: up to \$45
 - Frames: up to \$55
 - Single vision lenses: up to \$30
 - Lined bifocal lenses: up to \$50
 - Lined trifocal lenses: up to \$65
 - Lenticular lenses: up to \$100
 - Progressive lenses: up to \$50
 - Contact lenses:
 - ◊ Elective lenses up to \$80
 - ◊ Necessary lenses up to \$210
4. Not all providers participate in vision program discounts, including the member out-of-pocket features. Call your provider prior to scheduling an appointment to confirm if the discount and member out-of-pocket features are offered at that location. Discounts and member out-of-pocket are not insurance and subject to change without notice. Materials co-pay applies to lenses and frames only, not contact lenses.
 5. These features may not be available in all states and with all in-network vision providers. Discounts are not available at Walmart and Sam's Club. Please check with your in-network vision provider.