

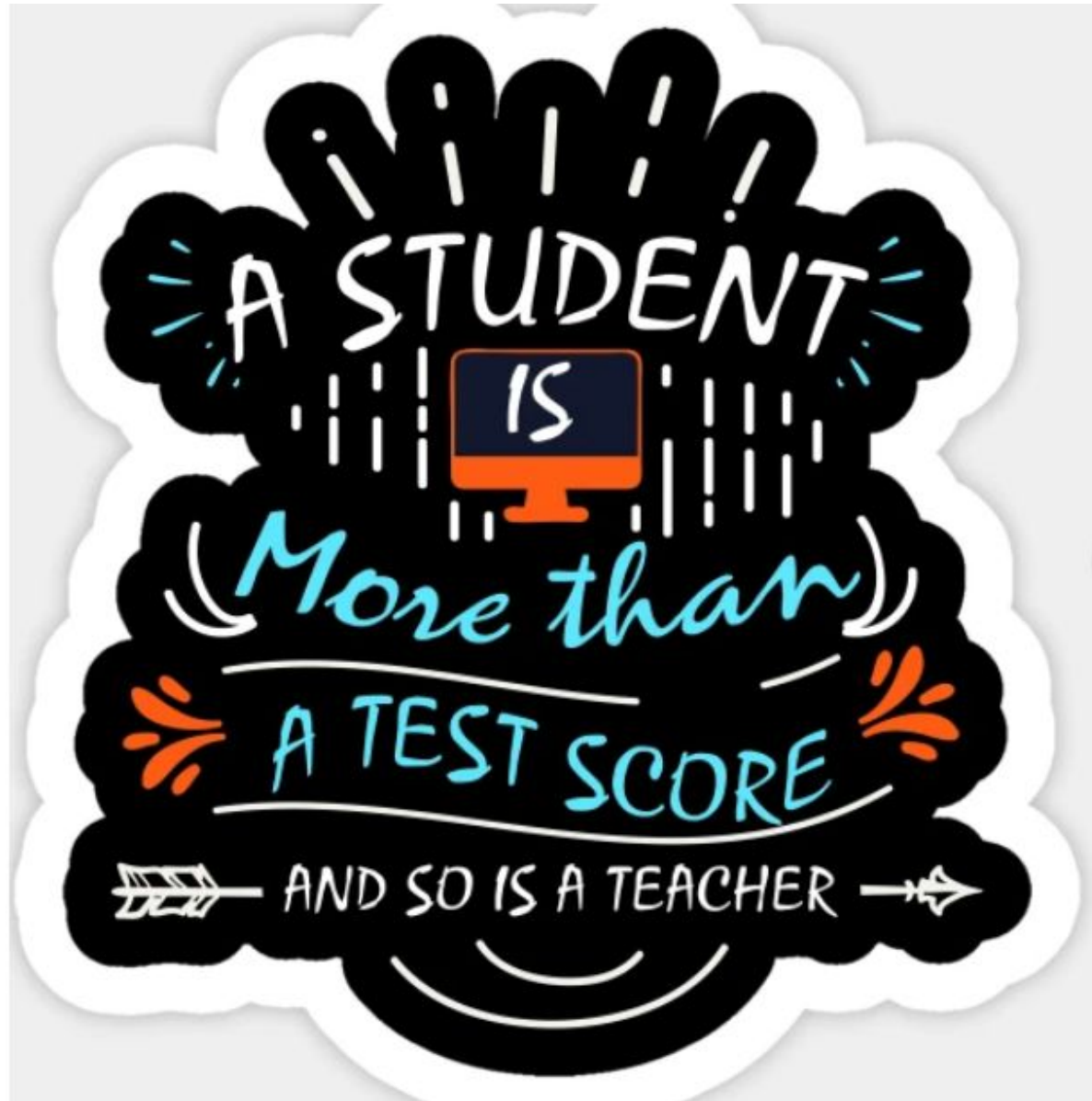
---

# **West Cypress Hills Elementary State Accountability for the 2021-22 School Year**

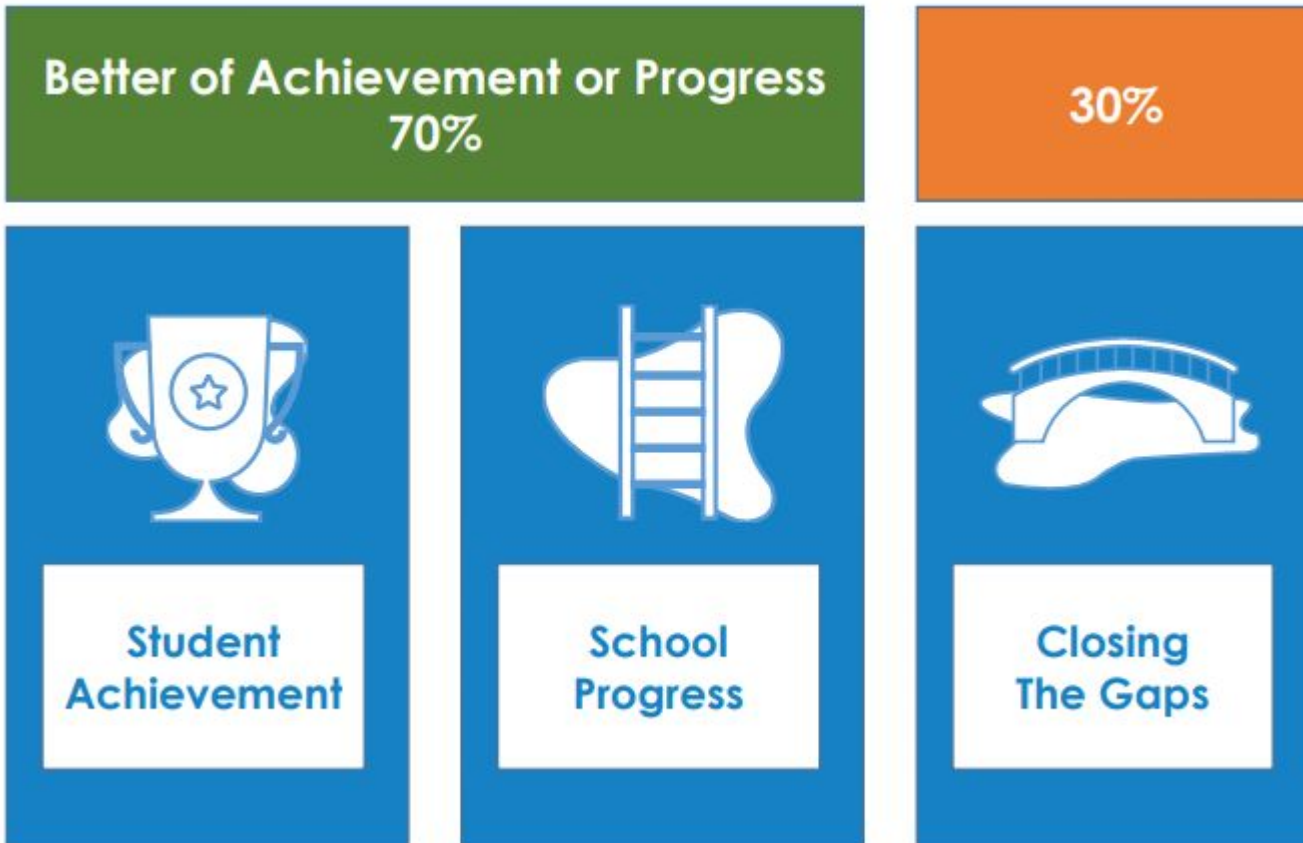
---



**Parent Meeting  
August 29, 2022  
Principal - Amy Russ**



# Texas Education Agency State Accountability Rating System



# Student Achievement:

Performance - Looks at how much students know and can do



- STAAR All Students - Combined over all subject areas evaluated (reading, mathematics, writing, science, and social studies)
- Credit awarded for Approaches Grade Level or above, Meets Grade Level or above, and Masters Grade Level

# School Progress:

Growth or Performance



Looks at how much better all students are doing that they were last year OR how much better students are doing than their peers in similar schools.

# Closing the Gaps

## Ensuring Educational Equity -

Looks at how well different groups of students are performing



### Students Evaluated (14 groups):

- All students
- Seven racial/ethnic groups: African American, American Indian, Asian, Hispanic, Pacific Islander, white, and two or more races
- Economically disadvantaged
- Students receiving special education services
- Students formerly receiving special education services
- Current and monitored emergent bilingual (EB) students/English learners (ELs) (through year 4 of monitoring)
- Enrollment Status



# Campus Calculations

	Rating	Overall Score	70% Best Score							Closing the Gaps 30%	
			Student Achievement		School Progress - Best Of						
					Academic Growth		Relative Performance				
			Rating	Score	Rating	Score	Rating	Score	Eco Dis	Rating	Score
LTISD	B	88	B	89*	B	89*	C	78	9.9%	B	86
LTHS	B	89	A	93	C	79	C	76	8.7%	B	80
LTMS	A	94	A	92	B	89	N/R	63	5.7%	A	100
HBMS	B	84	B	88	C	77	C	70	23.7%	C	75
BCMS	A	96	A	94	A	91	C	79	4.1%	A	100
LTE	N/R	62	N/R	67	N/R	65	N/R	55	38.1%	N/R	51
LWE	A	93	A	92	A	90	N/R	67	6.1%	A	96
BCE	A	93	A	91	B	89	N/R	59	4.3%	A	96
LPE	A	95	A	93	B	86	C	74	3.5%	A	100
SHE	A	92	A	91	B	89	N/R	59	4.4%	A	94
WCHE	C	78	C	79	C	75	N/R	54	7.0%	C	74
RHE	B	87	A	91	B	80	N/R	58	1.8%	C	78





---

# Progression of Support - District



- Continued work to build and align Curriculum resources and guiding documents for Core Content Areas K-5.
    - Collaboration with C&I and LTISD Teaching Teams
  - Increase in Instructional Coaching Support
    - 1 full time dedicated coach + additional coaches by content area
    - 2 instructional technology coaches - added 2022
    - 2 special education coaches - added 2022
  - Full Time TOSA (Teacher on Special Assignment) allocated to WCHE.
-

# Progression of Support - District



- Response to Curriculum Audit Professional Development
  - ❑ Increasing rigor in classrooms through research-based instructional strategies
  - ❑ Focus on a common set of instructional strategies
    - LTISD Power Moves
  - ❑ English Language Proficiency Standards (ELPS) Toolkit training and resources for all teachers in Oct/Nov 2022
  - ❑ Inclusive Practices training in Oct 2022

# Progression of Support - Campus



- Data and Assessment Analysis Cycles
  - TEA Interim Assessments
  - Universal Screeners BOY, MOY and EOY
    - MAP Growth K-8 Math, 3-8 Reading
    - mCLASS Reading K-2
- Teacher Mentor program
- Creation and implementation of Local Common Assessments
- Professional Development
  - Workshop Model - Small Group Instruction (Math/ELAR)
- Professional Learning Communities (PLC) Work:
  - Vertical Alignment of Instructional Practices
- Counseling Support:
  - Social Skills Instructional Focus

# What can parents do to help?



- Ask your children about what they are learning and take the opportunity to join in when you can!
- Talk to your child's teacher about your child's progress.
  - Upcoming parent/teacher conferences
  - Assessment Progress: BOY, MOY, EOY
- Read with your child every day!
- Volunteer and stay informed about campus and classroom activities. (Newsletters, Skyward Family Access)
- Attend PTO meetings and campus events.
- Make sure your child attends school regularly and has everything they need to show up ready to learn each day!
- Keep an open line of communication with your child's teacher, counselor and support staff.
  - Reach out if you need assistance or guidance - we have support available for all Tiger families.

# Q&A



- Plan for Struggling Learners
  - Tutoring, Additional Support Beyond Class
- Differentiated Instructional Practices
- Teacher Support
  - Accountability
  - Retention - Mentor Program
- Discipline and Learning Interruptions
- Science/Math - Hot spots
  - Explain the Drop from 2019
- Screen Time - Online learning tools
- Ongoing Progress Monitoring
  - How are we measuring improvement efforts?

---

*Thank you, Tiger Parents!*



*Questions?*

*[bit.ly/WCHEQuestions](https://bit.ly/WCHEQuestions)*



# Resources



- Texas School Report Card

- <https://txschools.org>

- 2022 Accountability Rating System

- <https://tea.texas.gov/texas-schools/accountability/academic-accountability/performance-reporting/2022-accountability-rating-system>

- TEA A-F Resources

- <https://tea.texas.gov/texas-schools/accountability/academic-accountability/a-f-resources>

- Answers in a Minute

- <https://tea.texas.gov/about-tea/news-and-multimedia/audio-and-video/answers-in-about-a-minute-a-f-accountability>